



Pattern, Gage Resistance, Gage Factor	Model	Dimensions (mm)				Remarks
		Grid		Base		
		Length	Width	Length	Width	

●KFWS Series Small-Sized Waterproof Foil Strain Gages

The KFWS series foil strain gages are small-sized waterproof gages suitable for outdoor or underwater strain measurement where gage bonding space is limited. The waterproofing resin is as thin as 1.3 mm, making them flexible enough to be bonded to a curved surface of 10 mm diameter.

Applicable Adhesives and Operating Temperature Range after Curing  
 CC-33A : -10~80°C CC-36 : -10~80°C EP-18 : -10~80°C

■Types, lengths and codes of leadwire cables pre-attached to KFWS series gages

When ordering, suffix the leadwire cable code (see table at the right) to the model number with a space in between.

Example :  
**KFWS-2N-120-C1-11 L3M2R**  
 for the gage with a vinyl-coated flat 2-wire cable 3 m long

Length	Vinyl-coated flat 2-wire cable		Vinyl-coated flat 3-wire cable	
	C1	D16, D17	C1	D16, D17
15 cm	L15C2R	L15C2S	L15C3R	L15C3S
30	L30C2R	L30C2S	L30C3R	L30C3S
50	L50C2R	L50C2S	L50C3R	L50C3S
1 m	L1M2R	L1M2S	L1M3R	L1M3S
2	L2M2R	L2M2S	L2M3R	L2M3S
3	L3M2R	L3M2S	L3M3R	L3M3S
4	L4M2R	L4M2S	L4M3R	L4M3S
5	L5M2R	L5M2S	L5M3R	L5M3S
6	L6M2R	L6M2S	L6M3R	L6M3S
7	L7M2R	L7M2S	L7M3R	L7M3S
8	L8M2R	L8M2S	L8M3R	L8M3S
9	L9M2R	L9M2S	L9M3R	L9M3S
10	L10M2R	L10M2S	L10M3R	L10M3S
15	L15M2R	L15M2S	L15M3R	L15M3S
20	L20M2R	L20M2S	L20M3R	L20M3S
25	L25M2R	L25M2S	L25M3R	L25M3S
30 m	L30M2R	L30M2S	L30M3R	L30M3S
Oprg. temp. range	-10~80°C			
Remarks	L-6, L-9 for 6 m or longer		L-7, L-10 for 6 m or longer	

Uniaxial

Resistance : 120Ω, Gage factor : Approx. 2.1

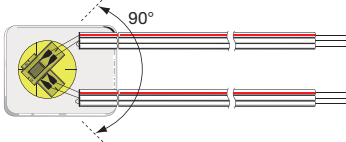


The following models with the leadwire cable code L5M3R are delivered with a vinyl-coated flat 3-wire cable 5 m long pre-attached.

KFWS-2N-120-C1-11 L5M3R				
KFWS-2N-120-C1-16 L5M3R	2	0.84	15	6
KFWS-2N-120-C1-23 L5M3R				

Biaxial, 0°/90° stacked rosette

Resistance : 120Ω, Gage factor : Approx. 2.1



The following models with the leadwire cable code L5M3S are delivered with a vinyl-coated flat 3-wire cable 5m long preattached.

KFWS-2-120-D16-11 L5M3S				
KFWS-2-120-D16-16 L5M3S	2	1.2	15	12
KFWS-2-120-D16-23 L5M3S				

●KCW Series Weldable Waterproof Foil Strain Gages

The KCW series foil strain gages are weldable gages, which do not require any coating treatment for use under high pressure or under water. They are available in 2 types: G10 with 1 gage and G14S with 4 gages. The G10 type endures a water pressure of approximately 10 MPa.

Mounting Method and Operating Temperature Range Spot welding -20 to 100°C

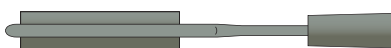
■Types, lengths and codes of leadwire cables pre-attached to KCW gages

When ordering, suffix the leadwire cable code (see table at the right) to the model number with a space in between.

Example:  
**KCW-5-120-G10-11 G5M3S**  
 for the gage with a polyethylene-coated crosslink 3-wire cable 5 m long

Uniaxial 1-element with polyethylene-coated crosslink 3-wire cable

Resistance : 120Ω, Gage factor : Approx. 2.2



Material : SUS304

For further information please contact:

TEST MACHINES AUSTRALIA  
 0418 369 505  
 sales@testmachines.com.au  
 www.testmachines.com.au

Length	Polyethylene-coated crosslink 3-wire cable		Length	Polyethylene-coated crosslink 3-wire cable	
	G4			G4	
15 cm	G15C3S		7 m	G7M3S	
30	G30C3S		8	G8M3S	
50	G50C3S		9	G9M3S	
1 m	G1M3S		10	G10M3S	
2	G2M3S		15	G15M3S	
3	G3M3S		20	G20M3S	
4	G4M3S		25	G25M3S	
5	G5M3S		30 m	G30M3S	
6	G6M3S				
Oprg. temp. range	-20~100°C				

The following model with the leadwire cable code G33S is delivered with a polyethylene-coated crosslink 3-wire cable 3 m long pre-attached.

KCW-5-120-G10-11 G3M3S	5	-	21	5	Minimum radius of curratur R20 Aminum quantity 2 piece
------------------------	---	---	----	---	---

A minimum quantity 10 piece